



The Academy of Board Certified Environmental Professionals

Certified Environmental Professional Application Workshop



The Academy of Board Certified Environmental Professionals

Certifying Environmental Professionals since 1979

AGENDA



- Who Are We?
- What Do We Do?
- What Makes Us Different?
- Benefits of Being a CEP
- Become a CEP
- Application and Review Process
- Once you are a CEP

AGENDA



- Who Are We?
- What Do We Do?
- What Makes Us Different?
- Benefits of Being a CEP
- Become a CEP
- Application and Review Process
- Once you are a CEP

WHO ARE WE?



- Fully accredited by the Council of Engineering and Scientific Specialty Boards
 - Professional Engineer, Graduate Engineer, Engineering Technician
- Certified Environmental Professional program initiated in 1979
- Worldwide
- Responded to need for interdisciplinary certification in environmental field
- Includes mid-level and senior environmental specialists

WHO ARE WE?



- Membership
- Board Of Trustees
 - 12 Person Board Elected Members - 3 year terms
- Committees
 - Executive Team
 - Communications
 - Marketing
 - Member Services
- Certification Review Board (CRB)



WHO ARE WE?



- What is ABCEP?
 - ABCEP is a member of the Council of Engineering and Scientific Specialty Boards (CESB), and the CEP certification is fully accredited by the CESB
- ABCEP a 501(c)6 – non-profit “commercially-oriented” organization

WHO ARE WE?



- Council of Engineering and Scientific Specialty Boards requires that ABCEP:

“...use procedures that assure relevance of the knowledge, skills, and abilities that define the body of knowledge of the certification scope.”

- CEP's must:
 - Understand environmental concepts, terms, principles
 - How to access and apply relevant information

WHO ARE WE?



Body of Knowledge

- Updated annually by Certification Review Board
- Includes:
 - educational courses and seminars
 - books and periodicals
 - websites
 - articles
 - organizations



AGENDA



- Who Are We?
- What Do We Do?
- What Makes Us Different?
- Benefits of Being a CEP
- Become a CEP
- Application and Review Process
- Once you are a CEP

WHAT DO WE DO?



- We provide a core of recognized and certified professionals
- ABCEP confers four credentials:
 - CEP-In-Training
 - CEP
 - CEP by Eminence
 - CEP Emeritus
- We provide mentorship for CEP candidates



AGENDA



- Who Are We?
- What Do We Do?
- What Makes Us Different?
- Benefits of being a CEP
- Become a CEP
- Application and Review Process
- Once you are a CEP

WHAT MAKES US DIFFERENT?



- Code of Ethics
 - Creed
 - Ethics Statement
 - Guidance for Practice as an Environmental Professional
 - Encourage Development of the Profession

AGENDA



- Who Are We?
- What Do We Do?
- What Makes Us Different?
- Benefits of Being a CEP
- Become a CEP
- The Application and Review Process
- Once you are a CEP

BENEFITS OF BEING A CEP



Individual:

- Increases marketability and career opportunities
- Provides focus for professional development
- Confirms and validates professional skills
- Enhances networking opportunities
- Conveys privileges - CEP Professional Stamp
- Gives a personal sense of achievement

BENEFITS OF BEING A CEP



Individual:

- Personalized Mentoring
- Electronic newsletter
- Access to CEP website
- Access to CEP Board meetings
- Notices of CEP member meetings
- Notification to existing and potential employers that the CEP is recognized by the environmental profession
- Better understanding of the environmental profession

BENEFITS OF BEING A CEP



Engagement Opportunities

- Participate at annual meetings
- Support environmental training
- Advertise in newsletters
- Submit articles (ABCEP, NAEP)
- Make presentations
- Exchange website links



BENEFITS OF BEING A CEP



Employer/Clients:

- Reduce professional liability insurance costs
- Strengthen technical proposals to clients
- Enhances confidence in knowledge, skills and accomplishments of employees
- Increase billing rates

BENEFITS OF BEING A CEP



Peer Recognition:

- Dr. Richard J. Kramer, CEP Memorial Award for Environmental Excellence
- Emerging Young Environmental Professional Achievement Award

AGENDA



- Who Are We?
- What Do We Do?
- What Makes Us Different?
- Benefits of Being a CEP
- Become a CEP
- Application and Review Process
- Once you are a CEP

BECOME A CEP



- Certified Environmental Professional-In Training
- Certified Environmental Professional
- Certified Environmental Professional by Eminence
- Certified Environmental Professional Emeritus



CERTIFIED ENVIRONMENTAL PROFESSIONAL-IN TRAINING

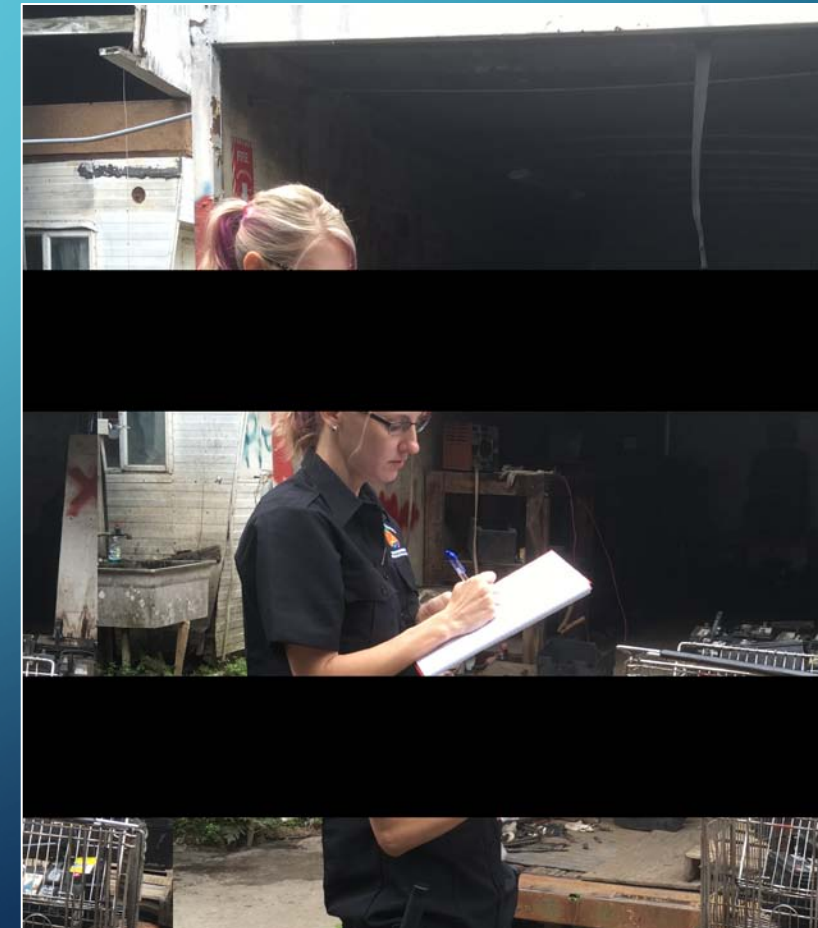


- Eligibility
 - Accredited Education and Base Experience
 - Bachelors + 1 year professional experience
 - Masters + 1 year of professional experience
 - PhD + 1 year of professional experience
- Provides path of entry to becoming CEP
- Accelerates CEP eligibility by enabling CEP application after 3 years of CEP-IT provided candidate meets the CEP Responsible Charge / Responsible Supervision requirements

CERTIFIED ENVIRONMENTAL PROFESSIONAL



- Eligibility
 - Accredited Education and Base Experience
 - Bachelor's + 9 years professional experience
 - Masters + 8 years of professional experience
 - PhD + 7 years of professional experience
 - Responsible Charge / Responsible Supervision
 - 5 of the Base Experience Years



CEP BY EMINENCE



- For highly qualified environmental professionals
- Exempt from the essay question portion of the application
- Submit a minimum of two and a maximum of five publications and/or professional presentations relevant to environmental issues

CEP BY EMINENCE



- Eligibility
 - Bachelor's Degree
 - At least 20 years of experience as an environmental professional
 - Master's Degree can substitute for one year of professional experience
 - Doctorate can substitute for two years of professional experience
 - At least 15 years of responsible charge and/or responsible supervision
 - Achievement of a leadership position within their organization
 - Demonstrated record of service to the profession

CEP Emeritus



- Retired from active professional practice
- Has maintained active status as a CEP for a minimum of five consecutive years
- Petition the Board of Trustees to waive:
 - Payment of annual dues
 - To reacquire the CEP active certification, the person must petition the Board to return to active status (only once during a holder's lifetime)
 - May use “CEP Emeritus” with their name

AGENDA



- Who Are We?
- What Do We Do?
- What Makes Us Different?
- Functional Areas
- Body of Knowledge
- Become a CEP
- The Application and Review Process
- Once you are a CEP

APPLICATION AND REVIEW PROCESS



Requirement:	CEP-IT	CEP	CEP By Eminence	CEP Emeritus
Application Fee	\$75.00	\$200.00	\$200.00	No
Certification Fee	\$62.50	\$125.00	\$125.00	No
Bachelors Diploma/Transcripts	✓	✓	✓	No
Reference Letters	3	4	44	No
Essay Questions	No	✓	No	No
Mentor Assigned	✓	Optional	No	No
Years in Responsible Charge or supervision	1-5 years	9 years	20 years	NA

Masters Degree = 1 Year Substitution

PhD = 2 Years Substitution

APPLICATION AND REVIEW PROCESS



Education Level	Years of Experience Required to Apply for CEP		
CEP Application without CEP-IT	Non-Supervisory	Supervisory	Total
Bachelor's	4	5	9
Master's	3	5	8
Ph.D.	2	5	7
CEP-IT for 3 years			
Bachelor's	3	5	8
Master's	2	5	7
Ph.D.	1	5	6

APPLICATION AND REVIEW PROCESS



Your steps:

1. Complete an application and pay the application fee
2. Upload:
 - Resume and transcripts
 - Recommendation letters (4)
 - Essays (5)
 - Publications and professional activities
3. Participate in interview
4. Sign ethics pledge

APPLICATION AND REVIEW PROCESS



- Responsible charge - the direction of environmental work by an environmental professional (you) to the extent that successful completion of the work is dependent on your decisions made without advice or approval of others.

And/or

- Responsible supervision - the supervision of another professional person's work by an environmental professional (you) to the extent that you assume the professional responsibility for the work.

APPLICATION AND REVIEW PROCESS



Helpful Tips:

- Provide all required items on application.
- Review the eligibility criteria before you apply: 5 of 9 required years must be supervisory or “environmental professional in charge”.
- Provide fully developed essays that demonstrate you have an understanding of the body of knowledge.
- We can help you understand the application but cannot coach you on completing it.

APPLICATION AND REVIEW PROCESS



Essay Questions

- Two required: Keeping Current and Ethics
- Three from Functional Area(s)
- Certification is awarded if five of the seven panel members recommend approval.

APPLICATION AND REVIEW PROCESS



- Essay questions scored (0-100%) each on:
 - Responsiveness
 - Perspective
 - Specificity
 - Logic of argument
 - Technical merit
 - Innovativeness
 - Persuasiveness



FUNCTIONAL AREAS

- Assessment
- Operations
- Planning
- Documentation
- Research and Education
- Sustainability



FUNCTIONAL AREAS



- *Selecting a functional area is optional*
 - you can now select questions from various categories

APPLICATION AND REVIEW PROCESS



ABCEP's Steps:

- Assigned to Lead Reviewer and 6 member panel
- Takes ~3 months to complete
- Lead Reviewer Telephone interview

AGENDA



- Who Are We?
- What Do We Do?
- What Makes Us Different?
- Benefits of Being a CEP
- Become a CEP
- Application and Review Process
- Once you are a CEP

CEP ANNUAL UPDATES



Maintain a CEP in good standing by:

- Keeping current on annual maintenance dues
 - \$120 CEP Annual Dues
\$140 includes \$20 late fee if after 31 January
 - \$60 CEP-IT Annual Dues
\$70 includes \$10 late fee if after 31 January
- Track annual maintenance points
 - 40 hours of continuing professional development each year
 - 20 hours awarded for full-time employment
 - Hours for service on boards of environmental organizations
 - Hours for attending continuing education training/conferences

CEP ANNUAL UPDATES



Handy Hints for simplifying your annual update

- If your hours are low, you can petition the board
- Report all your maintenance hours, higher numbers in some years can help if you have a low year
- Put a reminder on your calendar to update every few months

GETTING ENGAGED



- Connect with CEPs in your local area
- Become a MENTOR (mentor manual available)
- Serve on the Board of Trustees
- Serve on the Certification Review Board
- Make presentations about ABCEP and the CEP at meetings and conferences
- Connect at the NAEP Annual Meeting
- Submit articles for publication in the CEP newsletter

ABCEP INFORMATION

For further information, contact:



Andrea Bower, CAE

Executive Administrator, ABCEP

P.O. Box 460

Collingwood, NJ 08108

Phone: 215-858-8023

Fax: 856-210-1619

office@abcep.org or www.abcep.org